

# *Western Farm, Ranch & Dairy*

The vital resource of the Ag Industry

| West-Southwest

| fall-winter edition 2018

**Walinga  
Bulk Feed Bodies  
& Grain-Vacs**

**Plant Stress and Proline  
Avoiding Crop Performance Loss**

**“Catcher” Makes Calf Work Easier**

[www.FarmRanchDairy.com](http://www.FarmRanchDairy.com)





***NOW* is the time to get your  
Fall Fertilization Plan started with**



**PLANT NATURAL<sup>®</sup>**  
Soil Tests  
*by*

Actual Client



ESTABLISHED 1938.

***Your Crop's Dieticians<sup>®</sup>***

**Soil Tests are not all the same!**

Unlike any other method,



evaluate nutrients the way your plants do - *in any soil.*

This means that you get crop-specific proprietary custom

***Precision Guidance***

for preparing your fields to get next year's crops  
off to strong, healthy starts.

Guiding Growers Around The World with Innovative Solutions to  
Soil Fertility, Plant Nutrition and Irrigation Water Quality Management  
for Remarkable Yields and Quality.

Get all the details at **TPSLab.com** or call **956-383-0739**

**SLOAN**  
**EXPRESS**  
AMERICA'S AG PARTS SUPPLIER

SLOAN EXPRESS IS AN  
AUTHORIZED DEALER OF  
CAMSO PRODUCTS



**ARE YOUR**  
**TRACKS**  
**WORN OUT?**

WE OFFER NEW REPLACEMENT TRACKS & COMPONENTS FOR MOST MFG

**800-934-9777**



**SLOANEX.COM**

# contents

## *Western Farm, Ranch & Dairy*

West/Southwest • fall-winter edition 2018

### **Agriculture**

Plant Stress and Proline – Avoiding Crop Performance Loss .....	8
Stukenholtz Laboratory Inc.	
Celebrating 48 Years of Agricultural Testing .....	10
Farm For Under 3%! .....	11

### **Equipment**

Walinga – Bulk Feed Bodies & Grain-Vacs .....	14
Sunny D Mfg., Co. Inc – The Oregon Roadrunner .....	15
The Mighty Giant Line by Jones Manufacturing Co. ....	16
Pressurized Exhaust Kills Burrowing Rodents .....	17

### **Livestock**

Gabel Belting, Inc. – “The Cow Carpet People” .....	20
PBI Parlor Systems Leading the Way in the Dairy Industry .....	21
“Catcher” Makes Calf Work Easier .....	22
Ocean View Ranch Alpacas .....	22

### **Departments**

Marketplace .....	24
Advertiser Index .....	25

Front cover photo courtesy of USDA NRCS.

## *Western Farm, Ranch & Dairy Magazine*

a Ritz Family Publication

### **President / CEO**

Michael Ritz  
mikeritz@ritzfamilypublishing.com

### **Executive V.P. Operations**

Robert Davis  
rdavis@ritzfamilypublishing.com

### **Office Manager**

Angie Hawkins  
angie@ritzfamilypublishing.com

### **Administrative Assistant**

Brenda Stoner  
brenda@ritzfamilypublishing.com

### **Sales**

Kevin Davis  
kevin@farmranchdairy.com  
Pat Drury  
pat@ritzfamilypublishing.com  
Anna Short  
anna@farmranchdairy.com

**Ritz** Family  
Publishing, Inc.

### **Corporate Office**

Ritz Family Publishing, Inc.  
714 N Main St., Meridian, ID 83642  
www.ritzfamilypublishing.com

### **Sales**

For all sales inquiries, call toll free:  
1(800) 330-3482 or 1(208) 955-0124  
sales@ritzfamilypublishing.com

### **Subscriptions**

For a subscription or to change your existing  
address, call toll free:  
1(800) 330-3482 or 1(208) 955-0124  
info@ritzfamilypublishing.com

Printed By Owyhee Publishing, Homedale, ID

Copyright© 2018. All rights reserved.

Every effort has been made to ensure accuracy of this publication, however, the publisher does not assume responsibility for omissions or typographical errors.

The publisher does not assume responsibility or is liable for the contents of any advertising herein. Publisher's liability for errors in an advertisement is limited to a correct insertion in the next publication. In the event of a misprint, the publisher must be informed of such error prior to printing of the next publication.

**Water Wells to 5,000 Feet.  
Water finding technology.**



**Quality & Customer Service.**  
406-466-2980 | aquasourcemt@gmail.com



**WWW.AQUASOURCEMT.COM**

**TITAN WE BUILD IT ALL.**

**Aluminum Stock Trailer**

**Avalanche Bumper**

**NEW**

**Tandem Dually Flatbed**

**Gooseneck Dump Trailers**

**Gooseneck Stock**

**Construction Utility Trailers**

**(866) 294-4514**

2306 Highway 77 • Waterville, KS 66548

**www.titantrailer.com**

**DON'T FORGET  
TO CHECK US OUT AT  
WWW.TITANTRAILER.COM**



**Spokane City Center**  
33 West Spokane Falls Blvd.  
Spokane, WA 99201  
509.623.9727



- Walking Distance to Riverfront Park, Restaurants, Shopping, IMAX, INB Theatre, and The Convention Center
- Complimentary HOT Breakfast
- Free Indoor Heated parking
- Fitness Room
- Complimentary Wireless Internet
- Conference Room
- Business Center
- Coin Operated Laundry
- Hot Tub Suites
- Fridge and Microwave Rooms

**1.800.780.7234 | BestWestern.com**

Each Best Western® branded hotel is independently owned and operated.  
©2018 Best Western Hotels & Resorts. All rights reserved.



# agriculture



Photo courtesy of Texas Plant and Soil Lab.



**YOUR #1 SOURCE FOR:  
RELUGGING & REPAIRING YOUR  
RUBBER TRACKS AND RETREADING YOUR  
RADIAL TIRES!**

## Pivot Tires

Over 40 Years  
Of Experience  
Retreading  
Pivot Tires!



Farmers have called us and asked, "Can we still get D&S Steel-Belted Retread Tires for our new pivot system?"

**Marlan says "Yes you can!"  
In the 22.5 size!"**

**WE SHIP DAILY!**

**TENS OF  
THOUSANDS  
SOLD!**



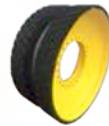
[www.dstiresales.com](http://www.dstiresales.com)

**WE SHIP  
ANYWHERE!**



**JOHN DEERE  
CASE IH - CAT**  
If you think your TRACKS  
have one season left . . .  
Now is the time for  
**RETREADING**  
**BEFORE IT'S TOO  
LATE!**

Driver Wheels



Roller Wheels



We Can Rebuild Your Guide Blocks And  
Your Driver & Roller Wheels On Track Tractors



620 North 23rd St.  
Richmond, IN 47374  
**(765) 965-5251**



661 South Lincoln St.  
West Point, NE 68788  
**(402) 372-5572**



26884 Pearl Road  
Parma, ID 83660  
**(208) 635-0700**

**WE PLEDGE TO PROVIDE THE BEST CUSTOMER SERVICE, THE BEST WARRANTY  
OF WORKMANSHIP & THE LARGEST INVENTORY AVAILABLE ON HAND AROUND!**



**The Right Droplet Size  
The Right Spray Tip  
The Right Result**

**COMBO-JET® ER, SR, MR & DR**  
**Droplet Size Selective Tip-Caps**  
Match the droplet size to your application,  
to optimize coverage and drift control



### TIP-WIZARD DIGITAL SPRAY TIP SELECTOR

Find the tip with the best droplet size for your application.  
Complete information for both rate controller and blended pulse systems.  
Available online or on our smartphone app!

FLOW-VIEW™ BALL  
FLOW INDICATORS



COMBO-RATE®  
NOZZLE BODIES



HIGH VOLUME  
21/32" INLETS



BOOM END  
FLUSH VALVES



[www.wilger.net](http://www.wilger.net)

**(877) 968-7695**

# Plant Stress and Proline

## Avoiding Crop Performance Loss

Larry Zibilske, Ph.D.

Vice-President of Research, TPS Lab

In his 1995 State of the Union speech, President Bill Clinton highlighted a USDA program addressing plant stress as an example of wasteful “pet project” government spending. We knew then, and know even more now, that plant stress is a very significant yield-and-quality-robbing factor in agricultural crops to which little attention has been paid.

We try to optimize fertility, irrigation, weed and pest management practices to achieve the best production under the constraints of environment and economics. However, it has become clear that plant stress comes from everything we try to control; it is additive, and it can be cumulative—resulting in loss of yield and quality potential.



For the grower, visual detection of plant stress often comes too late to do anything more than damage control by preventing further loss of yields and quality for the season. One visually-obvious “too late” example is dropped squares and bolls in cotton. Another is shed flowers and pods or a pre-

dominance of two and three-bean pods in soybeans if stress is present early-on, or empty pods if stress occurs later.

In plant health, as in human health, there are signs, although they may not be obvious, that stress is present. The trick is in detecting and interpreting those signs – ideally, before they can be seen. This is evidenced by many of us having annual physical check-ups and blood (in the case of plants, sap) tests to detect “hidden” problems. Certain “biological signals” accumulate in the plant during periods of stress. They are produced in response to environmental stresses such as water, light, temperature and salinity. Their appearance are signals that something is hindering normal plant growth and development with consequent loss of yields and quality.

One of the common stress molecules in plants is Proline. Proline is an amino acid normally produced during protein production. In times of stress, plants over-produce this molecule which can be measured with whole leaf analysis. Elevated proline indicates stress responses have been initiated by the plant. The excess proline stimulates metabolic changes in the plant to cope with the stress.

However, proline is not only a signal but also directly helps maintain internal cell turgor, preventing electrolyte losses by supporting good osmotic balance. Proline also reduces the undesirable reactive oxygen species molecules (ROS) which, in times of stress, can overcome the natural ability of plants to dispose of these harmful molecules that are normally produced during metabolism.

Good crop nutrition is fundamental to warding-off harmful effects of environmental stresses. Therefore, proline is both a plant stress response and a signal. Increased proline production allows a plant to marshal its physiology to accommodate the stress. But generally, the internal changes the plant makes to manage stress reduces its productivity in favor of survival advantage.

In short, high proline values are simply symptoms of larger

**Poulsen General Store & Supply**

151 S. Oak Ave • Eaton, CO 80615 • 970-454-2542  
Outside Sales Specialist - Kurt Banks - Cell Phone 970-518-8404  
kurt@poulsenacehardware.com

**Available in 17 colors!**

**Improve your breeding program!**  
**Tail Paint**  
\*TRUSTED QUALITY SINCE 1963\*  
M1600 solvent-based or  
M1800 water-based  
17 oz. Inverted Marking Paint

**\$2.79 Per Can**  
Minimum Purchase 144 Cans  
Case quantities of 12 cans per case.  
Mix colors by the case.  
**Drop shipped from the factory FREIGHT FREE!**  
[upsidedownpaint.com](http://upsidedownpaint.com)



problems in the plant.

The primary use of the proline data is to formulate a plan to ameliorate or manage the stresses causing the proline response. With high proline, the plant is telling us that something is wrong.

We don't want to eliminate stress, but control it so that the plant can continue to grow and produce well during the season. Elimination of stress is not a goal because the plant uses certain stresses as timing functions for several important metabolic processes.

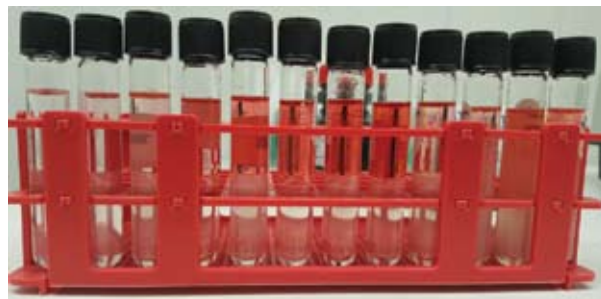
While the overall concern is in reducing chronic or unanticipated stresses, there are certain conditions during crop development under which induced and carefully-controlled plant stress can be of great financial benefit to the grower: Scheduled and managed stress can result in higher nutrient content of the crop (premium quality) or greater yields, or both. This is demonstrated by actual field results.


Accordingly, the goal is not to minimize stress across-the-board throughout the season, but to carefully time the induce-ment, control and manage it.

Regardless, carefully managing overall stress responses during growth promotes better total plant performance. Your lab's in-season recommendations will include steps to minimize destructive unplanned stresses and manage desired ones detected by increased proline production. As an example, for a low-moisture stress, the lab may recommend increasing potassium fertility to increase internal water use efficiency. Additionally, based on other plant tests, other nutrients may

be recommended to maintain canopy structure and function, and to reduce or eliminate disease and insect pressures.

The plant lab uses the proline test to monitor total stress in crop plants. If stress levels are high, the results, together with sap and tissue nutrient test results, guide the lab in prescribing changes to your management that will control those stresses. Remember, elevated proline levels indicate stresses that are most often caused by multiple factors. Your lab will consider those factors to formulate a complete remediation plan that addresses all stresses.



Proline may have other effects on plants as well. Collection of proline data has been going on for some time. Differences have been seen between reproductive tissues from stressed plants and those of those of low-stress plants. Therefore, if you hold seeds, tubers or bulbs over to plant yourself or sell them for planting, controlling stresses may influence future crops as well. These effects continue to be evaluated. 

*"To Harvest The Best, Plant The Best!"*



**Generation 2 & 3**  
**Teton • Castle Russet**

**Burbank • Alturas • Payette**

Call Us Today For More Information.

**DROGE FARMS**  
**Manhattan, Montana**

Glenn: 7590 Stagecoach Tr. • (406) 580-7588  
Vernon: 7525 Stagecoach Tr. • (406) 539-6586  
Tim: 7666 Stagecoach Tr. • (406) 539-7200

*Canela Russet*

Size Profile

Optimal Long Storage	147 Days of Dormancy
Resistant to Hollow Heart	Excellent size profile & shape
Good Disease Expression	Very Dormant
Minimal Disease Issues	Good Storage
89 to 95 Percent #1's	Cinnamon Color

Profit from the High Altitude Advantage  
Extensive Varietal Selections • Highest Quality Available  
(Over 200 varieties to select from)

*Colorado Certified*  
**SEED POTATOES**

Colorado Certified Potato Growers Association  
P.O. Box 267, Monte Vista, CO 81144  
(719) 274-5996 • [www.coloradocertifiedpotatogrowers.com](http://www.coloradocertifiedpotatogrowers.com)

# Stukenholtz Laboratory Inc.

## Celebrating 48 Years of Agricultural Testing

In 1970, there were no commercial soil and plant testing laboratories in Idaho. Farmers applied fertilizers based upon educated guesswork. Dr. Dale Stukenholtz and his wife Joyce saw an opportunity to build a business and started a soil and plant testing laboratory and field consulting service based in Twin Falls, Idaho. Dr. Stukenholtz had an unusually diverse background as an educator at the University of Nebraska, an agronomist in the fertilizer industry, and a farmer, and he saw a need for more modern fertilizer recommendations to produce greater yields at less cost. His clients were the growers, so he could make unbiased recommendations that maximized economic return to the farmer. After extensive field research, he developed these improved fertilizer recommendations that quickly became popular with growers and form the basis for nearly all fertilizer applications in the intermountain west area. Stukenholtz Laboratory clients include growers from all neighboring states and several foreign countries including Australia, Canada, Egypt, Russia, Mexico and New Zealand.

Stukenholtz Laboratory provides 1 to 2 day service, including picking up and delivery time, across Southern Idaho from St. Anthony and Grace to Parma and Homedale. Results can be delivered, mailed, faxed, or pulled from the Laboratory's webpage: [www.stukenholtz.com](http://www.stukenholtz.com). To improve their service, Joyce and Dale Stukenholtz expanded the laboratory 21 years ago, installed the latest in computerized instrumentation and quality control, and made it the most modern and well equipped agricultural laboratory in their market area.

Critical to the success of Idaho's most efficient laboratory and largest field consulting firm has been its personnel. Dr. Stukenholtz has had a PhD in Soil Fertility and Plant Nutrition since 1964 and his son and Laboratory Manager Paul has nearly completed his own. Consulting agronomists include

J.P. Kruckeberg of American Falls, a 39 year veteran of field consulting and the most successful single agronomist in the state, and Bart Kunz. The Laboratory and office staff are equally good.



Analysis room at Stukenholtz Laboratory Inc.

Stukenholtz Laboratory continues with research and improvement. In conjunction with the Idaho Crop Production Association and University of Idaho CFEP research project, Stukenholtz Laboratory has helped to ensure that fertilizer recommendations in Idaho are the most cost efficient possible and produce the maximum economic yield while protecting the environment. Stukenholtz Laboratory personnel have conducted field research on over 40 different products and continue to be the experts at "cutting edge" agricultural technology. As we end our first 47 years of business and begin our next, we would like to thank our current and former employees for their dedicated work and our customers and clients for their years of support.



## STUKENHOLTZ LABORATORY Inc.

### Agricultural Consulting & Testing

- Soil Testing
- Irrigation Scheduling
- Feed Analysis
- Contract Research
- Tissue Testing
- Pest Management
- Field Research
- Grid Sampling
- Variable Rate Fertilization
- International Testing
- Agronomic and CCA Seminars
- Nematode Testing

Contact: Paul Stukenholtz, Consulting Agronomist

Agronomists: JP Kruckeberg, Bart Kunz, Cameron Brower, Antone Christensen, Wess Gibson

**208-734-3050 • 800-759-3050 • Fax 208-734-3919**

P.O. Box 353 • 2924 Addison Ave E. • Twin Falls, ID 83301

E-mail: [frontoffice@stukenholtz.com](mailto:frontoffice@stukenholtz.com) Website: [www.stukenholtz.com](http://www.stukenholtz.com)




## FARM FOR UNDER 3%!

**B**argain interest rates may be the optimistic news for farmers this year, as both long and short term rates remain at historic lows. But while many lenders cling to old Prime Plus formulas for establishing loan rates, others prove they can do better.

"Farmers can borrow substantially under 3%, and close to half of what Prime plus 1% formulas are," according to AGRIfinancial Services, a nationwide lender focusing exclusively on farm lending. Headquartered in Louisville, KY, the company provides an alternative way to borrowing for operating needs, as well as long term fixed rate mortgages.

"It's like a home equity loan, but for farmers," they say. AGRIfinancial Services works with California and western producers in all lines of the industry. Instead of crops or machinery for collateral, farmers use their real estate to back the loan. The resulting benefits pay off with customers.

Not only is the loan rate very low, but the product also offers a 10-year commitment where producers do not have to come in every year, or 3 years to renew the line. Additionally, the loan can be used for farm and business needs – not strictly operating expenses. The loan is priced based on a variable, LIBOR-indexed rate, but farmers can also choose to lock pieces of their debt to a fixed rate if they desire, he explained. All is done inside the loan, without the need for refinancing.

It's quite an amazing loan product and an example of what nontraditional lenders like AFS have been bringing to the market. The company is owned by CGB Enterprises, a major buyer and shipper of farm commodities. 

## PARSONS DRILLING INC

P.O. Box 1265 • Fallon, NV 89406

**(775) 867-3009**

- REVERSE CIRCULATION DRILLING
  - LINE SHAFT TURBINE PUMPS
  - COLUMN PIPE, OIL TUBE AND SHAFT
  - SUBMERSIBLE PUMPS AND MOTORS
- Test Pumping • Well Cleaning and Brushing  
6 to 16 inch • Yield Test

**Drill Rig**  
Cooper 3000  
60 Foot Derrick  
150,000 lb. Draw Works  
17.5 Rotary Table  
will handle 50 foot casing

**Crane Truck**  
28,000 lb. Capacity  
80 Feet Reach

**Can pull pumps  
through roof of  
pump house.**

**Call about pricing for drilling  
Pumps, Repair, all makes and models  
Well cleaning and repairs**

## AGRIfinancial Services

A Division of  Enterprises, Inc.

### LOW-COST FARM LOANS AND LEASES

- Long term, fixed rate mortgages
- Lines of credit for under 3%
- Leases for barns, bins, irrigation, that save on taxes



**Call Toll Free: 877-548-2622**  
**www.CGB-AFS.com**

*More value.*



Some manufacturers offer a lower quality irrigation system option. We don't. All Reinke irrigation systems use high-strength steel for longer life, lower maintenance costs and better performance in the field. Contact us for the best value in irrigation systems.

### Farmore of Idaho

642 Farmore Rd. • Jerome, ID 83338 • (208) 324-3341  
20355 Highway 30 • Buhl, ID 83338 • (208) 543-6787

 **Reinke**  
MORE RIGHT THAN RAIN  
[www.reinke.com](http://www.reinke.com)

# equipment



Photo courtesy of USDA Natural Resources Conservation Service.



ALSO YOUR  
#1  
CORNSTALK  
RAKE

## ULTIMATE RAKE



Available models  
17, 19, 25 & 27  
with rubber mounted teeth

12 Wheel Side Delivery Rake  
Capable of merging 12, 14 or even 16' windrows together.  
Available with Rubber Mounted or Tine Teeth



16 & 18 Wheel Rubber Mounted Tooth V-Rake  
Using the same great features of our standard V-Rake  
we have added the rubber mounted tooth wheels  
from our Ultimate Rake for a cost effective rake  
that will rake 6 different crops.  
From Cornstalks to Green Chop to Dry Hay.

Since 1959  
**ROWSE**  
QUALITY  
FARM EQUIPMENT

84504 HWY 11  
BURWELL, NEBRASKA  
(800) 445-9202  
[www.rowserakes.com](http://www.rowserakes.com)



## HUNDERBIRD IRRIGATION OF IDAHO

Thunderbird Irrigation of Idaho is a manufacturer of the Thunderbird Wheelines that are sold throughout the country. Thunderbird Wheelines are known for their End-Drive Wheel-line System. Thunderbird Irrigation has moved from it's California facility to a newly expanded facility in Idaho and is operating under the name Thunderbird Irrigation of Idaho.

Thunderbird is a Lateral Wheeline, or basically irrigation pipes that move on wheels. It is powered by an End-Drive, versus a Center-Drive, system which requires only a gas powered engine on the end of the system. Low Labor, Low Operating Costs, and Low Maintenance make it one of the most cost effective systems for mechanized water delivery.



[www.thunderbirdirrigation.com](http://www.thunderbirdirrigation.com)



### Cost Effective Design Features

- End Drive System
- Multiple Transmission Units
- Self Leveling Sprinkler
- The Modular Advantage

98 Fort Hall Ave.  
American Falls, ID 83211  
208-226-7777  
Fax: 208-226-7713

**Neeralta**  
Manufacturing

The Leader in Grain Bagging Innovation



**Durable, dependable...different.**

In 2010 Neeralta's grain bagging equipment introduced an entirely new set of standards...

Interchangeable cross auger widths for 9', 10' or 12' bags, integrated bag winder and on-board swing auger, are just a few of the industry-firsts that have made Neeralta the leader in grain bagging innovation.

neeralta.com  
1.866.497.5338




**NEW & USED TRAILER SALES  
RENTALS & LEASES • MANUFACTURING**

**WEST'S LARGEST INVENTORY  
EQUIPMENT FINANCING**

**SPECIAL OFFER — SELL ONLY  
27 SETS AVAILABLE  
Hopper Rental Returns**

**\$26,500/each**




**TUFF BOY**

**(209) 858-4131**

3870 West Yosemite Avenue • Lathrop, CA 95330  
email@tuffboy.com • www.tuffboy.com

# Walinga

## Bulk Feed Bodies & Grain-Vacs

From concept, design and through production, Walinga meets the customer's needs at every step. Creating outstanding products that are innovative and durable, with some client's vehicles being passed from generation to generation.

Walinga is a leading North American manufacturer of transportation equipment and portable pneumatic conveying systems for grain, feed, seed... virtually any dry bulk material. Walinga is still a family owned and operated company. The total commitment to quality is not only our inheritance - it's our foundation for the future.

Walinga products represent the best in manufacturing excellence. Our in-house engineering and design teams utilize the most current computer technology available. State of the art equipment, combined with over 60 years of experience, ensures that our customers receive unsurpassed quality.

Comprehensive engineering capabilities allow us to offer sizes, capacities, features and options that are specifically job-matched according to individual requirements. The services of our Engineering Department are available to our customers to assist in the selection of the properly specified chassis. Every Walinga vehicle is designed and produced to best fulfill its designated function.

Custom-built aluminum feed bodies and trailers, pneumatic conveying systems, recycling trucks and bodies, aluminum and steel dump bodies... each built according to exact standards. Every stage of the manufacturing process from design to completion is performed by Walinga. The result - a cost effective, durable product line that responds to any challenge with premium.

### Walinga Agri-Vac

The only system you'll ever need. Gives one-person total grain-handling capability! Do it all with the Walinga Agri-Vac. Fill or empty storage facility being used. The Walinga Agri-Vac puts an end to legs, augers, sweeps and shovels. Grain handling has never been simpler, safer or healthier.

Just couple the Agri-Vac to your tractor and drive into position. Lightweight vacuum/pressure hoses attach in seconds and flex easily. Suddenly even tight spots and awkward angles are no problem!

### Bulk Feed Trailers and Bodies

Walinga Inc. has been manufacturing bulk feed transportation equipment for more than 60 years. In this time we have become committed to an ongoing program of research and development. In response to the increasingly diverse needs of our customers Walinga is and will continue to be on the forefront of technological evolution.

The options and features of the Walinga Bulk Feed Delivery Units are numerous. Walinga Bulk Feed Delivery Units can help you in your quest to increase production, performance, and efficiency.





# Sunny D Mfg., Co. Inc – *The Oregon Roadrunner*

**T**he Oregon Roadrunner, manufactured by Sunny D Manufacturing Company, Inc., is the all purpose machine when it comes to loading and unloading blocks of hay, everything from a stack of bales in the field to a six-pack of 3x4 bales. What used to take several people hours to buck the hay, whether loading trucks, unloading trucks, or moving the hay from one truck to another, now takes one person just minutes to accomplish. There is no other machine that can match it.



## Humble Beginnings

In 1971, Art Davina – then a rancher in Bonanza Oregon – saw the need, designed and built the first Oregon Roadrunner.

That machine is still being used today.

While struggling through the hard times, redesigning to incorporate new ideas and improving on old ones, and building a strong customer base one customer at a time, Art managed to build his back-yard business to a point where he was able to open his first shop. By 1985 the business was large enough that he began the process of incorporating it. Later, needing more space to meet customer demand, he bought a larger property, and moved the business to its current location in Klamath Falls.

When health problems forced Art to take a step back and de-stress his life, he wanted to find the perfect person to take the reins. Ed Majors took over as GM in 1998 and in 2003, began the process of buying the company from Art. Today, Ed officially owns it.

## Sunny D Today

From those humble beginnings in 1971 to the 21st century, Sunny D Manufacturing Company Inc. has grown to a business totaling 15 employees. Welders, fabricators, mechanics, a painter, and various support personnel create from bare metal the machine that called “The Oregon Roadrunner.” What used to be only available in white with your choice of stripe, a customer can now choose their color and design. For more information, call 1-541-884-2361, or write 4343 Highway 39, Klamath Falls, OR 97603.

56

## The leader in Hay-handling



### *The Oregon Road Runner*

The most efficient, heavy-duty hay-handling system available. PLUS we have a good inventory of Used Fork Lifts with NEW Squeeze Attachments. **NOW your choice of engines:** Cummins ISC 8.3 or Cummins ISL 9.0



## Sunny “D” Manufacturing, Inc.

(541) 884-2361 • 4343 Highway 39 • Klamath Falls, OR 97603

# The Mighty Giant Line by Jones Manufacturing Co.





## Tub Grinders

by Jones Manufacturing Company

**Grinds All Types Of Grain**  
 • Ear & Shelled Corn • High Moisture Corn • Small Grains

**Grinds All Types Of Hay**  
 • Loose Hay • Square Bales • Big Round Bales, Including 1 Ton Bales

AVAILABLE IN PTO, POWER UNIT & HYDRAFORK MODELS



**MODEL 2015**  
The PTO machine uses up to a 300 horsepower tractor. Remote control system. Hydraulic swing elevator. Trouble free high capacity single discharge auger.



**MODEL 4012**  
Hydraulic swinging elevator system. 50,000 lb. capacity suspension. Remote control system. Horsepower to 700.



**MODEL 5012**  
The Hydrafork makes it a true, one-man operation. Set up & grind in minutes! HP up to 800. All new engines equipped with mfg's extended warranty.

**FEATURES:**  
All tubs open hydraulically for servicing and changing screen. Tub operation is controlled by electronically controlled hydraulic governor. Hydraulically chain driven tub with variable speed and reverse. All elevators drive from the top with rubber lagged pulley.

**JONES**  
MANUFACTURING CO.  
[www.mightygiant.com](http://www.mightygiant.com)

1486 12th Road, PO Box 38  
Beemer, NE 68716  
402-528-3861

[Follow us on Facebook](#)

# WE ARE *Mighty* GIANT

Since the day Les Jones decided there had to be a better way, Jones Manufacturing Company has produced the most durable, high capacity, operator-oriented Hay Grinder and Mulch Grinder in the world – the Mighty Giant Tub Grinder. You get more than 50 years of hands-on in-the-field experience in every Mighty Giant we build.

Often imitated, innovation begins at Jones Manufacturing! Jones Manufacturing was the first with a hydraulic opening tub (we built our first unit in 1960), the first with an electronic governor, and the first with a hydrafork. From the single discharge auger, to the rubber lagged top-drive elevator no other grinder has the features, capacity and durability of the Jones Mighty Giant.

New products and new features can sometimes lead to new problems. At Jones Manufacturing, we maintain a relationship with local operators to be sure that all features and designs are field-tested in the same environment our customers face. This same relationship gives us important feedback so that new designs and innovations are the result of experience, not marketing hype.

All Jones Mighty Giant Hay and Wood Grinders are of commercial, heavy-duty quality, designed for the high capacity grinding at a low cost per ton. With a Mighty Giant, you not only get a host of operator friendly features, but also the security of years of durability. We're not the first tub grinder company in the world, but we're confident that we are the last one you'll need.

For more information on the Mighty Giant Line by Jones Manufacturing Co., please visit us online at [www.mightygiant.com](http://www.mightygiant.com), or call us at 402-528-3861. If you're in the neighborhood, stop in and visit us at 1486 12th Road, Beemer, NE 68716.



## The best treatment for your stored crops? It's all in the science.


IVI offers two excellent options to protect your stored crops: Jet-Ag® and FruitGard™ — both effectively kill pathogens, preventing post-harvest decay. Contact your IVI sales rep for expert analysis of your storage needs, and create your custom plan for storage success.

**Jet-Ag®**

- PAA combines with existing humidity to create a thermal fogging vapor
- Application service from IVI

**FruitGard™**

- Chlorine dioxide gas fumigant
- Simple application process



**INDUSTRIAL VENTILATION, INC.**

1-208-463-6305 [ivi-air.com](http://ivi-air.com) 723 E Karcher Rd, Nampa, ID 83687



# Pressurized Exhaust Kills Burrowing Rodents

The H & M Gopher Control PERC® system (Pressurized Exhaust Rodent Controller) uses carbon monoxide from pressurized engine exhaust to kill burrowing rodents such as gophers, ground squirrels, prairie dogs, moles & voles.

According to the company, exhaust gas has long been one of the most lethal and least expensive methods to kill burrowing rodents. But until now there hasn't been an economical, efficient delivery system.

Company owners, Allen Hurlburt and Virginia Massey, claim the PERC® system involves a narrow steel wand that is used to probe the burrow and inject pressurized exhaust. The burrow is consumed with lethal concentrations of carbon monoxide. The rodent has no chance to escape or block the burrow.

An internal combustion engine generates the carbon monoxide and drives a compressor pump that pressurizes the exhaust gas to 110 psi in a storage tank. An air hose and a hand held probe inject the gas directly into the burrow without any digging.

Brand new to the PERC® lineup is the PERC® 620, a trailer-mounted unit with a 20 hp Kohler motor and six reels. Each with a 50' hose and hand probe. The 620 features a tandem axle with turf tires. It sells for \$14900 plus S&H.



PERC® Model 620

The PERC® 412 is a trailer-mounted unit with a 14 hp Kohler motor and four reels. Each with a 50' hose and the hand probe. The 412 features turf tires and is designed to be pulled behind an ATV. It sells for \$8525 plus S&H.

The PERC® 206 is a skid-mounted unit with a 7 hp engine and two reels. Each with 50' hoses and hand probes.

It sells for \$5425 plus S&H.

The PERC® 206T is a skid unit mounted on its own special trailer. It sells for \$5850 plus S&H.

The PERC® system is simple to use and safe for the operator as well as wildlife since there is no poison bait or explosion involved. Crop stands are not damaged during treatment. No other control method is as effective, efficient, and as inexpensive to operate as the PERC®.

A PERC® system can treat moderately infested alfalfa fields at about 3.5 acres an hour with a single operator. Each probed location requires only about 2 to 3 minute injection times.

Units have been shipped to customers from Southern California to Central Canada, and as far east as Florida. Though most of the market has been with alfalfa growers, orchard and specialty crop growers have also purchased units. The PERC® system is the best solution anywhere burrowing rodents are a problem.

For more information call toll free (855) 667-5181 or visit the website [www.hmgophercontrol.com](http://www.hmgophercontrol.com)



Western Farm, Ranch & Dairy Magazine is online!  
Check out our publications on Issuu!  
[issuu.com/ritzfamilypubs](http://issuu.com/ritzfamilypubs)

Like us on Facebook!  
[www.facebook.com/farmranchdairy](http://www.facebook.com/farmranchdairy)  
Download magazines from our website!  
[farmranchdairy.com/frd\\_order.htm](http://farmranchdairy.com/frd_order.htm)

1-800-330-3482



## BURROWING RODENT PROBLEMS?

PERC® - Pressurized Exhaust Rodent Controller can eliminate them!

- Simple To Use
- Low Operating Cost
- Minimizes Crop & Equipment Damage

- Fast Working
- Environmentally Friendly

**No Poison bait,  
No Explosions!!**

**Toll Free  
(855) 667-5181  
Cell Phone  
(530) 640-3981**



**H&M GOPHER CONTROL®**  
MANUFACTURING & SALES

[WWW.HMGOPHERCONTROL.COM](http://WWW.HMGOPHERCONTROL.COM)

PERC®  
Model 412





# livestock



Photo courtesy of USDA Agricultural Research Service.



# INCREASE YOUR BOTTOM LINE



**EB-MET™ , Bypass Methionine**  
with extra energy

**New** – from the makers of Energy Booster™

**University Researched** – for bypass and bioavailability

**Energy Booster Coating** – durable and adds energy

**High Rumen Bypass**

**High Intestinal Digestibility**

**High Bioavailability**

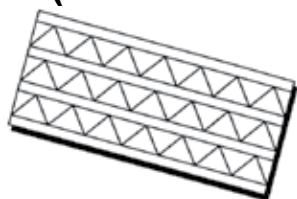


**START FEEDING TODAY! 800-323-4274**

MilkSpecialties.com • Eden Prairie, MN • Made in the U.S.A.

  
**MILKSPECIALTIES**  
GLOBAL  
Animal Nutrition

**ARE YOUR COWS HAVING FOOT  
TROUBLE?  
(TOO MUCH CONCRETE!!!)**



*New Cross  
Groove Pattern  
Increases Traction*

**10 Year Guarantee**

• We have heavy 3/4" thick rubber 5' & 6' wide up to 500' lengths for feed aisle. • Grooved Rubber. • Parlor ramps, ect.

• Good for heavily traveled areas.

Call for info and references.

Doing Business for over 30 Years

Rt. 16 • Chaffee, NY 14030

CALL 716-496-6025 • 716-440-2879 • Fax: 716-496-2006

www.gabelbelting.com • gabeltimothy@yahoo.com



**Gabel Belting,**

"First in providing long lasting cow comfort"

## Gabel Belting, Inc. – “The Cow Carpet People”

Tim Gabel continues a family tradition started by his father Bob Gabel in 1970. Bob Gabel perfected a method to reclaim used rubber conveyor belt from the mining industry. This rubber belting is made by using the highest quality rubber and bonding it to steel cables which run laterally through the belt. This process produces a product which is very unique for providing rubber flooring in dairy and horse operations. Rubber flooring greatly reduces concrete stress related to problems occurring in the legs and feet of cows confined to free stall dairy facilities.



The steel cables keep the rubber from stretching and buckling caused by constant livestock traffic and skidsteer scraper machines. The belt stays in place and will last indefinitely as compared to the shorter life of some new manufactured rubber products available today.

Unlike these newer manufactured products, the steel cabled rubber belting has a much greater toughness. This provides for a solid rubber floor effect.

Once the belt is reclaimed from the mine it is shipped to our processing yard in Chaffee, NY. In Chaffee we have machines which were developed by Bob Gabel. The machines process the belt and prepare it for a custom made fit once it arrives at the farm.

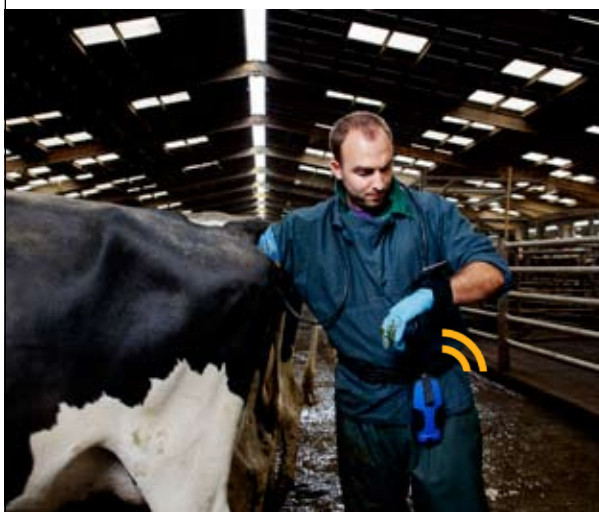
At the processing yard the belting is passed through a grooving machine. The grooves do much to improve footing once the belt is installed in the typically wet environment of free stall dairy operations – most importantly, the feeder alleys and milk parlor holding area.

Once the belt has been processed and prepared for each custom made order, it is shipped to the farm and ready for installation. Gabel Belting has a crew of professionally trained personnel to install the belt.

For more information contact: Tim Gabel at 716-496-6025, Fax: 716-496-2006, Cell: 716-440-2879, E-mail: gabeltimothy@yahoo.com, website at www.GabelBelting.com or write Tim Gabel Belting, Inc., P.O. Box 358, Route 16 Olean Road in Chaffee, NY 14030

## Easi-Scan:Go™

**Make preg checking easy with  
portable, wireless ultrasound**



507-529-8200 | contact@imv-imaging.com  
www.imv-imaging.com



# PBI Parlor Systems Leading the Way in the Dairy Industry

Operating from their office in Portales, New Mexico, PBI Parlor Systems is a leading manufacturer of milking stalls and equipment for dairies around the world.

The owner, Steve Peacock, has a strong dairy business background, and an even stronger pride in his company's products. His commitment to improving dairy profits and delivering excellent customer service is unmistakable. And each of the company's employees shares his dedication.

Of course it all starts with an efficient stall design - their stalls are engineered to be the best solution for maintaining cow safety and dairy efficiency. In fact the company came into existence in the late 80's after designing a parallel stall at the request of a local dairyman.

His stall design was a winner! Good news travels fast, and word of this design spread quickly from person to person, which led to more parlor business.

Building on his design and engineering experience, the entire PBI crew continues to produce and install innovative parlor stalls all over the world. To ensure the quality of the final product, they control every stage of production. Dairies of all sizes, from small family-dairies to large mega-dairies have been fitted with PBI stalls.

Because PBI designs and builds the stalls, they are custom fitted to your unique requirements. They use heavy duty galvanized and stainless steels to provide a durable yet sleek stall with no rough

edges to hurt cows and profits. Performance excellence is ensured by their expert project installer and crew, which they make available for every installation. You will assuredly receive a quality, hassle-free installation, and on-going support.

Value is built into every PBI stall design. Low installation and maintenance costs make PBI stalls a valuable investment for dairies of all sizes. Plus their durable construction, smooth operation and labor saving design provide ongoing increased profits.

Innovation is what started PBI. Their stall designs are adaptable to suit the needs of dairies of all sizes, no matter the environment. They are compatible with all brands of milking equipment. And though innovation started PBI, service is what maintains and grows the company. PBI Parlor Systems takes pride in its continued commitment to meet and exceed their customers' needs. From the free quote they give you, through the completed installation, they maintain a hands-on approach that delivers unrivaled customer service.

But their customer support doesn't end with the sale. PBI's on-going personal contact with their clients and easy accessibility cater to meeting your needs now and later. They choose to maintain close relationships with their clients. Client feedback about stall performance is essential to PBI's commitment to developing and refining products that satisfy the needs of dairy farmers all over the globe.

For more information, call PBI Parlor Systems at 800-295-5677 or visit [www.PBIParlorSystems.com](http://www.PBIParlorSystems.com)



## PBI PARLOR SYSTEMS Elite Stalls

The Elite Parallel Stall is our signature stall

- A powerful hydraulic cylinder operates an entire row raising the headstalls to a full 62" clearance. High enough for even your largest cow.
- Lowering of headstalls can be adjusted to your specifications.
- Rapid exit allows cows to leave at the same time.
- Counter weights are used on our patented divider gates. Nothing is spring loaded.
- This stall is offered on 26" centers for jersey cows only, 27" centers for mixed herds or holsteins, or 28" centers for holsteins.

[pbiparlorsystems.com](http://pbiparlorsystems.com)

**PBI PARLOR SYSTEMS** 43214D US 70, Portales, NM 88130  
Phone: 1-800-295-5677 • Fax: 1-575-359-6810 • Email: [pbiparlorsys@yucca.net](mailto:pbiparlorsys@yucca.net)

# “Catcher” Makes Calf Work Easier

If you own an ATV or UTV and have cattle, Dan Leo has an attachment to make working with young calves safer and easier.

“Safety is the number one goal of our durably built and user-friendly catchers,” says Leo, president of Safety Zone Calf Catchers. “The traditional way to tag and process calves can be dangerous and often takes more than one person to do the job. With our calf catcher it’s easier on the producer, the cow and the calf. One person, who can operate an ATV or UTV, can safely work calves.”



One person can now easily and safely process calves with Leo's Safety Zone Calf Catcher.

The calf catcher is a durably constructed steel cage that mounts with ball hitches on the front and back. It works well in all types of terrains and conditions. With the front gate locked open, the driver approaches the calf and captures it in the cage by shutting the spring-loaded gate. The producer en-

ters the pen through the open side by stepping from the ATV or UTV and moves the calf to the rear holding area where he can tag, vaccinate, weigh and even band the babies while protected from the mother cow. When finished the producer releases the calf out the back to its mother.

“Traditionally, producers have to get to the calves early after birth otherwise it can be difficult to catch and even hang on to them, and then it can require two or more people depending on the protective behavior of the mother cow while the processing takes place,” Leo notes. “With our calf catcher unit, one person can catch calves, even if they are a week or older when they have plenty of run in them. Another benefit is the calf holder located at the back of the catcher. It not only secures the calf for processing, but works very well for pairing out, as the cow can see and smell her baby and will then easily follow to another pasture or calving barn in inclement weather. Cows will follow the calf virtually anywhere!”

The ATV catchers sell for \$2,095 plus freight shipping. Catchers designed for UTVs are an additional \$450. Other options available include a waterproof, digital scale - especially beneficial to seedstock producers and a tow hitch that aids long distance moving.

The company sells directly to cattlemen but welcomes dealership inquiries.

“Built in both Nebraska and South Dakota plants, the calf catcher will last for generations. Sales have stretched across the U.S. with exports to Canada, Australia and France,” Leo adds.

To see it in action, check out the video on the company’s website.

Contact: Safety Zone Calf Catchers, LLC, 1146 7th Ave, Dannebrog, Neb. 68831 Phone: (877)505-0914; [www.safetzonecalfcatchers.com](http://www.safetzonecalfcatchers.com)



## Ocean View Ranch Alpacas

Ocean View Ranch is a family owned and operated alpaca ranch serving the northern California area. The ranch is located only forty five miles south of the San Francisco International Airport in the beautiful Santa Cruz coastal mountains.

At Ocean View Ranch we are dedicated to improving the quality of our alpaca offspring by breeding to world class herdsires with proven pedigrees. The results of our breeding plan are apparent with each generation. Our alpacas truly represent superior fiber, conformation and temperament.

We welcome your inquiry into our award winning alpacas. For more information, please feel free to call Denise Moles at (831) 325-9441 or e-mail her at [MrsMoles@aol.com](mailto:MrsMoles@aol.com). We look forward to assisting you in fulfilling your alpaca dreams.





# SAFETY ZONE™

## CALF CATCHERS

**A Cowman's Best Friend at Calving Time!**



**Fits ATV's and UTV's!**



**Safe Release!**

Now available with digital scale!

**Jim Anderson DVM, MS** – "I use my ATV version with scales almost every day to process newborn calves. It is as handy as a pocket on a shirt! Buying this product is a lot less painful than a trip to the hospital."

**Lynn Gravely, TX** - "Occasionally the "Brahman" personality comes out in our ladies. The chore of tagging and weighing is very simple with the aid of your catcher. Dianne, my wife of 30 years points out that the cost of the calf catcher is much less than the hospital bill."



**Easy and Safe Catching!**

### Designed for Processing Safety...

- Enables quick and safe calf catching!
- Convenient, step in access of producer!
- Holder secures calf for easy processing!
- User-friendly inside release of calf to cow!
- Move calves easier with cow following!
- Less cow stress, mother can see and smell calf!
- Reduces danger while working new calves!
- Quick Mount/Dismount on both ATV & UTV's!

**ONE PERSON can now SAFELY and EASILY process calves without concern of the protective mother cow!**

Watch Action Video at  
**SafetyZoneCalfCatchers.com**

For local dealers or to order,  
call 877-505-0914 today!

**DEALER INQUIRY INVITED**

# Ocean View Ranch Alpacas

Los Gatos, CA

- Quality Fiber—Confirmation—Temperament
- Championship Blood Lines
- Registered Huacayas
  - Registered Suris
- Affordable Pricing
- Financing Available
- Customer Support
  - Raw fiber
- Alpaca Products



**Contact: Denise Moles**

**(831) 325-9441**

**mrsmoles@aol.com**



Convenient custom semen collection —  
In stud or on farm service

High quality semen processing and freezing

Worry free semen storage and prompt delivery of semen to you or your customers

Secure and sheltered sire housing and collection facilities

Certified semen services approved lab and facility providing semen eligible for domestic and many foreign markets



Centrally located and well established in the Intermountain West for over 30 years—We are big enough to serve you and still small enough to give your animal individual attention.



*Let us help you maximize the breeding potential of your bulls or stallions. A bank of frozen semen is the cheapest form of breeding insurance that you can buy!*

**Give Us A Call Today**

(435) 753-7883 Office • (435) 753-2951 Fax

email: [info@hoffmanalbreeders.com](mailto:info@hoffmanalbreeders.com)

[www.hoffmanalbreeders.com](http://www.hoffmanalbreeders.com)

1950 South Highway 89-91 • Logan, Utah 84321

# marketplace

## AGRICULTURE



IRRIGATING THE VALLEY SINCE 1967  
Distributor of All Types of  
Irrigation Equipment  
Largest Selection In Central Valley  
**(559) 673-4261**  
Fax: (559) 674-4078  
19170 Hwy. 99, Madera, CA 93637

### Cushman Drilling

208-785-1588  
208-681-5616



Down-Hole Television Inspection  
Perforation Cleaning - Sonar-Jet

LOOK TO AITCHISON  
For the Best No-Till Forage Drill at the  
**BEST Price**  
REESE HAY MOWERS  
Only 5 moving parts and no gear box  
**TIGERCO**  
(800) 432-4020

## AGRICULTURE

### TANK COATINGS ROOF COATINGS

Available for **METAL**, composition  
shingles or tar roofs. Long lasting and  
easy to apply. We also manufacture  
tank coatings for concrete, rock, steel,  
galvanized or mobile tanks.

Call for our free catalog:  
**VIRDEN**  
PERMA-BILT  
(806) 352-2761  
[www.virdenproducts.com](http://www.virdenproducts.com)



### FARM LIKE YOU MEAN IT

**EASYRAKEFACER.COM**



NO MOVING PARTS - WILL NOT BREAK  
MAINTAIN CUT LENGTH - BETTER FEED  
STAY IN THE CAB - NO HYDRAULICS  
CALL FOR YOUR DEMO TODAY

**Easy Rake®**  
SILAGE FACER  
HANSONSILO.COM  
800.THE.SILO

## IRRIGATION



**Agri-Lines Irrigation, Inc.**  
360 Riverside Road • Grandview, ID 83624  
(208) 834-2380 • Fax: (208) 834-2385

**Agri-Lines Irrigation, Inc.**  
115 North 2nd Street • Parma, ID 83660  
(208) 722-5121 • Fax: (208) 722-5681

**Agri-Lines Irrigation**  
5025 E. Winnemucca Blvd.  
Winnemucca, NV 89446  
775-625-1945

**Zimmatic®**  
STRENGTH TO GROW ON



BAUER • HOBBS • REINKE  
OCMIS • ABI • JOHN DEERE  
Equipment Available Nationwide!  
Toll Free: 800.360.4991  
Cell: 813.760.2001  
Email: [DaveyJonesDave@gmail.com](mailto:DaveyJonesDave@gmail.com)

## AGRICULTURE

### United Oil

"Serving Idaho Since 1939"

Caldwell	208-459-6363	Twin Falls	208-734-2631
Boise	208-343-5474	Jerome	208-324-2317
Fairfield	208-358-0205	Buhl	208-543-4252
Gooding	208-934-4935	Glenns Ferry	208-366-2468

**[www.UnitedOil.net](http://www.UnitedOil.net)**

Premium Fuels & Lubricants for  
Your Farm, Home or Business

## PRINTING



[www.fairlys.com](http://www.fairlys.com)  
208.342.7777  
800.246.7879  
2301 Main St. • Boise, ID 83702



Idaho's #1 Corvette Dealer!



## PRINTING



**COPIES**  
**PRINTING • FAX**

714 North Main  
P.O. Box 556  
Meridian, Idaho 83680  
Phone: 208-888-5682  
Fax: 208-288-1946  
Cell: 283-3567  
Email: greg@modernprinters.net  
[www.modernprinters.net](http://www.modernprinters.net)

## PUMPS



**G.J. VERTI-LINE  
PUMPS, INC**

*Serving The Agricultural  
Community Since 1952*

*We Sell & Repair  
Them All*

**1970 Highland Ave. E.  
Twin Falls, Idaho  
208-733-4278**

## REAL ESTATE

**Bar M Real Estate**  
Scott McNally, Qualifying Broker  
**Roswell, NM 88202**  
**575-622-5867**  
[www.ranchesnm.com](http://www.ranchesnm.com)

## YOUR AD HERE

**THE MARKETPLACE  
WORKS!**  
Call 1-800-330-3482 to get the  
marketplace working for your  
business.

## ADVERTISERS INDEX

ADVERTISER	WEBSITE	PAGE
Aanonson Sprinkler Co		24
AGRIFinancial Services	<a href="http://www.CGB-AFS.com">www.CGB-AFS.com</a>	11
Agri-Lines Irrigation, Inc.		24
Aquasource Drilling	<a href="http://www.aquasourcemt.com">www.aquasourcemt.com</a>	5
Bar M Real Estate	<a href="http://www.ranchesnm.com">www.ranchesnm.com</a>	25
Best Western Plus Spokane	<a href="http://www.bestwestern.com">www.bestwestern.com</a>	5
Colorado Certified Seed Potatoes	<a href="http://coloradocertifiedpotatogrowers.com">coloradocertifiedpotatogrowers.com</a>	9
Cushman Drilling		24
D & S Tire Inc	<a href="http://www.dstiresales.com">www.dstiresales.com</a>	7
Davey Joans		24
Droge Farms		9
Easy Way Cattle Care	<a href="http://www.easywaycattlecare.com">www.easywaycattlecare.com</a>	26
Fairly Reliable Bob's	<a href="http://www.fairlys.com">www.fairlys.com</a>	24
Farmore of Idaho – Standley Co	<a href="http://www.reinke.com">www.reinke.com</a>	11
Gabel Belting	<a href="http://www.gabelbelting.com">www.gabelbelting.com</a>	20
G J Verti-Line Pumps, Inc		25
H & M Gopher Control	<a href="http://www.hmgophercontrol.com">www.hmgophercontrol.com</a>	17
Hoffman A-I Breeders, Inc	<a href="http://www.hoffmanaibreeders.com">www.hoffmanaibreeders.com</a>	23
IMV Imaging	<a href="http://www.imv-imaging.com">www.imv-imaging.com</a>	20
Industrial Ventilation Inc	<a href="http://ivi-air.com">ivi-air.com</a>	16
Jones Manufacturing Co	<a href="http://www.mightygiant.com">www.mightygiant.com</a>	16
Milk Specialties Global	<a href="http://milkspecialties.com">milkspecialties.com</a>	19
Modern Printers	<a href="http://www.modernprinters.net">www.modernprinters.net</a>	25
Neeralta Manufacturing, Inc.	<a href="http://neeralta.com">neeralta.com</a>	14
Ocean View Ranch		23
Parsons Drilling Inc	<a href="http://www.parsonsdriilling.com">www.parsonsdriilling.com</a>	11
PBI Parlor Systems	<a href="http://www.pbiparlorsystems.com">www.pbiparlorsystems.com</a>	21
Poulsen Ace Hardware	<a href="http://poulsenacehardware.com">poulsenacehardware.com</a>	8
Rowse Rakes	<a href="http://www.rowserakes.com">www.rowserakes.com</a>	13
Safety Zone Calf Catchers	<a href="http://safetyzonecalfcatchers.com">safetyzonecalfcatchers.com</a>	23
Sloan Express	<a href="http://www.sloanex.com">www.sloanex.com</a>	3
Spokane Ag Expo	<a href="http://www.agshow.org">www.agshow.org</a>	28
Stukenholtz Laboratory Inc	<a href="http://www.stukenholtz.com">www.stukenholtz.com</a>	10
Sunny D Manufacturing Inc	<a href="http://www.oregonroadrunner.com">www.oregonroadrunner.com</a>	15
Texas Plant & Soil Lab	<a href="http://TPSLab.com">TPSLab.com</a>	2
Tigerco Distributing Co.		24
Thunderbird Irrigation of Idaho	<a href="http://thunderbirdirrigation.com">thunderbirdirrigation.com</a>	13
Titan Trailer Mfg	<a href="http://www.titantrailer.com">www.titantrailer.com</a>	5
Tuff Boy	<a href="http://www.tuffboy.com">www.tuffboy.com</a>	14
United Oil	<a href="http://www.UnitedOil.net">www.UnitedOil.net</a>	24
Virden Perma-Bilt Co	<a href="http://www.virdenproducts.com">www.virdenproducts.com</a>	24
Walinga USA Inc	<a href="http://www.walinga.com">www.walinga.com</a>	27
Wilger Inc	<a href="http://www.wilger.net">www.wilger.net</a>	7



Made in  
the U.S.A.

# ***Do it the easy way.***

## **Easy Way Cattle Care**

The most complete line of parasite control available!



### **ATTENTION CATTLEMEN:**

If your cattle or bison are bothered by flies, lice, ticks or other parasites, you need of our parasite treating stations. They work in pasture or lot on cows, calves and bison. They are fully automatic and require very little maintenance. **Your cattle will do better if they are free of parasites!**



**EASY WAY CATTLE CARE** | P.O. Box 325, Decorah, IA 52101

**563-387-0932 or 563-382-2099**

**info@easywaycattlecare.com**

**[www.easywaycattlecare.com](http://www.easywaycattlecare.com)**



# HARDEST WORKER ON THE FARM.

**OUR 7816 DLX** provides you with maximum loading capability. With 12 feet of suction hose and a truck loading kit, it can easily move 5500 Bu/hr of corn or barley. At the heart of all this power is Walinga's SRT Sound Reduction Blower and our 2018 Super hardened airlock. The 7816 DLX comes with accessories. See [Walinga.com](http://Walinga.com) for complete details. Walinga has been building tough reliable equipment for over sixty years which is why farmers agree; for performance and durability, a Walinga Vac is tough to beat in the long run.



**WALINGA.COM**

# WALINGA®

## TOUGH TO BEAT IN THE LONG RUN

### 1-800-466-1197

A background image of two farmers in a golden field. One farmer on the left wears a straw hat and a red plaid shirt, while the other on the right wears a blue plaid shirt. They are both looking down at something in their hands. The field is filled with tall, golden grain.

# *Spokane* 2019 **AG EXPO**

Produced by Greater Spokane Inc.

**FEB 5-7**

[AgShow.org](http://AgShow.org)

WHERE FARMERS  
**MEET**  
**LEARN**  
**GROW!**